



— FURNITURE AND LIGHTING —

COLLECTION BOOK

— 2024 —



Authentic Models

DESIGNS WITH A STORY



NEW ITEMS 2024

Introducing Authentic Models' exquisite collection for 2024, a harmonious blend of timeless design and contemporary innovation. Each piece reflects a commitment to craftsmanship and a passion for the extraordinary.

As a brand known for its commitment to authenticity, the 2024 collection from Authentic Models is a testament to the enduring appeal of craftsmanship and the timeless allure of classic design. Each item invites you to embark on a journey of discovery and rediscover the joy of surrounding yourself with objects of true beauty and substance.



DISCOVER OUR NEWEST ITEMS HERE:





HERITAGE

Our company was founded in 1968 in Amsterdam. Initially focused on making specific home decoration items, we gradually evolved into a high-end furniture and home decoration brand with a distinct European heritage.

For that reason, we are proud to celebrate our **56th anniversary** in 2024!
A long-standing history in which a unique design style and excellent customer service have been the key to our worldwide success.

Throughout the past decades we always have been designing every piece in our collection with an inspiring story behind it, whilst clearly being characterized by style, leisure, and adventure.

Today, we remain true to this ethos by expressing an outspoken spirit through highly attractive furnishings and accessories for today's discerning customers.

We are proud to offer our Collections through a worldwide network of dedicated retail partners. Enriching any space from traditional opulence to modern minimalist all over the world.

As we are now entering our second half-century, we find ourselves embarking on our own fresh new journey of discovery, marked with the introduction of intriguing new designs that sparkle the mind.



AUTHENTIC MODELS

The décor in our interior tells the stories of our lives.
Reflecting the memories we cherish, the pursuits we enjoy, our family history and all the things that interest or matter to us.
With some pieces chosen for their tangible connection, others purely for their aesthetic appeal.

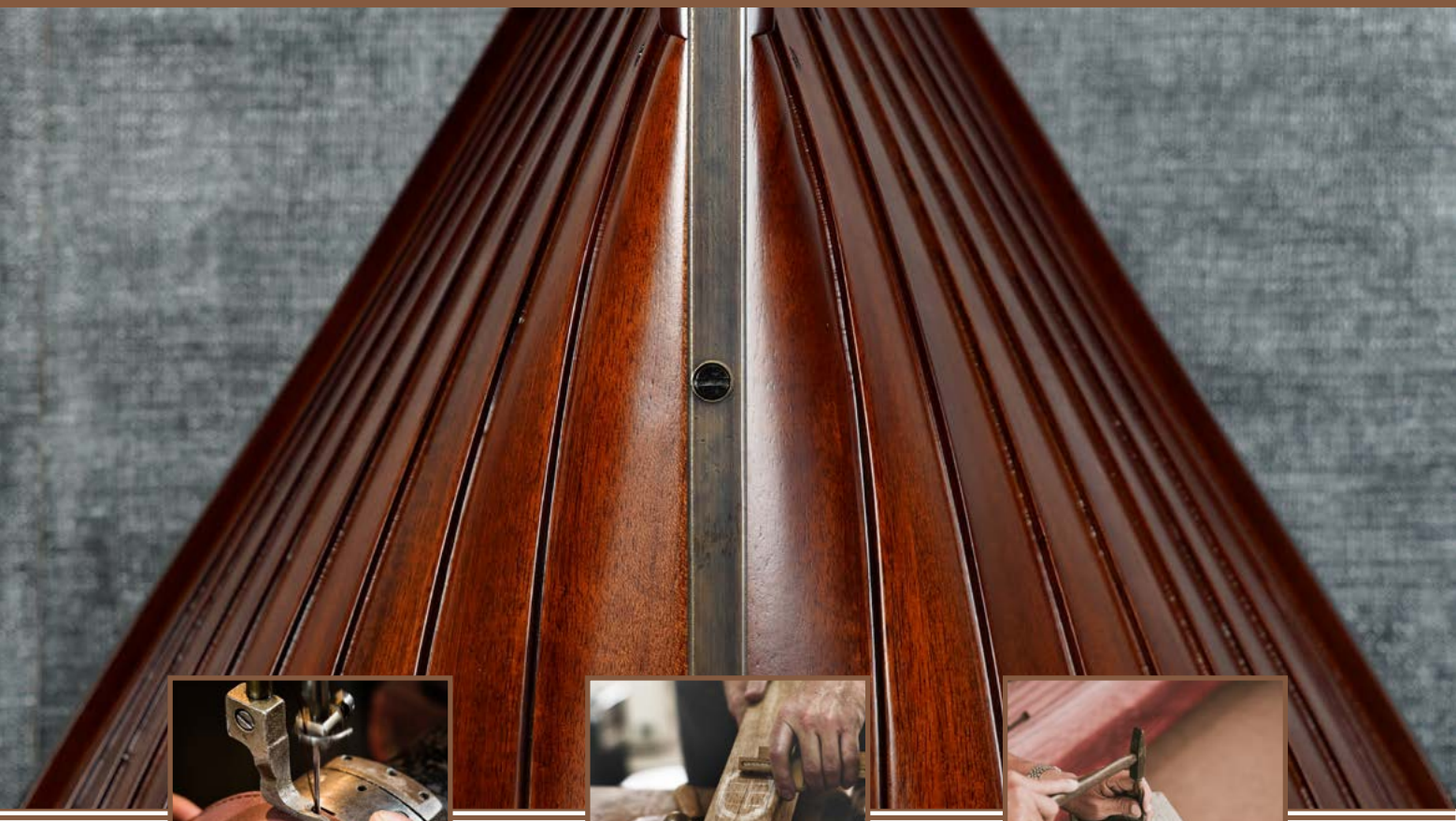
At Authentic Models, we combine the two through elegantly handcrafted furniture, objects and ornaments which capture the essence of an era or interest via meaningful and surprising design.

Inspired by an adventurous spirit, our collections celebrate style, leisure, and adventure.
Treading in the footsteps of history while also exploring beyond the beaten track.

We create original new designs with a daring contemporary twist, character and quality that complements every personal style, to fit in with both modern and traditional settings.

Finally, we would like to wish you a pleasant time exploring this Collection Book 2024.





CRAFTMANSHIP

While design and materials create the potential for the beauty of a piece of furniture or accessory, craftsmanship determines the final result.

All our handcrafted products are made with attention to detail, which makes each and every piece unique. The craftsmen who work on our collection are professionals and understand their trade meticulously.

That's why we believe that in crafting there are no mistakes,
just unique creations.



TABLE OF CONTENTS

FURNITURE

BARS & BAR CABINETS	6 - 17
BOOKCASES & CABINETS	18 - 25
DESKS	26 - 33
CHAIRS & STOOLS	34 - 41
TABLES	42 - 53

LIGHTING

TABLE LAMPS	54 - 61
STANDING LAMPS	62 - 65
HANGING LAMPS	66 - 69

HOW TO REACH US	70
-----------------	----



BARS & BAR CABINETS

Step off the beaten path and decide to create your own private club. The smell of leather, the feel of rich wood, the warm glow of subdued lighting. Act out that secret urge to be a bartender at Harry's Bar. Just wheel out this upscale serving station of superior drinks. Pull glasses from within, juggle bottles, break the ice and shake but do not stir.



DISCOVER OUR BARS & BAR CABINETS HERE:





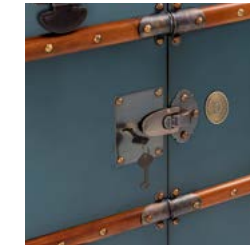
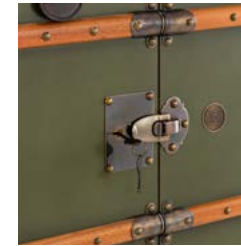
STATEROOM BAR, BLACK

MF078B

M. 59 x 62 x 147 cm, 23.2 x 24.4 x 57.9"

Fun and functionality coalescing into an impressive piece of historic proportions. Wheel in the bar. Park and lock it somewhere close at hand! Made in the style of turn-of-the-century travel trunks. Solid brass hardware and bridle leather accoutrements complete a hand-built, two-part bar inside a large trunk set on sturdy wheels. A multitude of drawers, two serving trays, racks for both horizontal and vertical bottles. Mirror and foldout work shelf. Taking out the shelf unit on the right frees up a removable game board. Iconic. Confidently evocative of the Belle Époque when a hunt required only a Martini or a whiskey sour at hand!

Furniture
BARS & BAR CABINETS



**STATEROOM BAR,
FIELD GREEN**

MF078FG

M. 59 x 62 x 147 cm, 23.2 x 24.4 x 57.9"



**STATEROOM BAR,
OFF WHITE**

MF078OW

M. 59 x 62 x 147 cm, 23.2 x 24.4 x 57.9"



**STATEROOM BAR,
PETROL**

MF078P

M. 59 x 62 x 147 cm, 23.2 x 24.4 x 57.9"



**STATEROOM BAR,
BURGUNDY**

MF078Y

M. 59 x 62 x 147 cm, 23.2 x 24.4 x 57.9"





INCLUDING CHAMPAGNE COOLER,
CAVIAR BOWL AND LED LIGHTS

CHAMPAGNE BAR

MF190

M. 64 x 61 x 150 cm, 25.2 x 24 x 59.1"



BAR POLO CLUB CHAMPAGNE

MF191

M. 89 x 35 x 87 cm, 35 x 13.1 x 34.3"



Hollywood likes to show in the movies champagne bottles popping with a loud noise, the corks flying across the room and the fizzy drink showering all the party guests. Well, that's not the way to do it, plus, it would be a shame to waste such a wonderful drink. The Roaring Twenties and The Great Gatsby's champagne glasses were coupes. Legend has it that the saucer-shaped bowls were modelled on the breasts of Madame de Pompadour, the French King Louis XV's mistress, now isn't that just perfect for a decadently luxurious party? Better follow the proper champagne etiquette to fully enjoy one of the best antidepressants ever.



POLO CLUB BAR, BLACK

MF114XB

M. 89 x 35 x 87 cm, 35 x 13.1 x 34.3"



POLO CLUB BAR, FIELD GREEN

MF114FG

M. 89 x 35 x 87 cm, 35 x 13.1 x 34.3"



POLO CLUB BAR, OFF WHITE

MF114OW

M. 89 x 35 x 87 cm, 35 x 13.1 x 34.3"



POLO CLUB BAR, PETROL

MF114P

M. 89 x 35 x 87 cm, 35 x 13.1 x 34.3"

Hailing from the Belle Epoque, an era when armies of stewards and porters used to wheel trunks from the Wagons-Lits train to a waiting transatlantic steamer. Those were the days! Big enough for pur-sang bartending but small enough to fit into a chic studio. Built in canvas-covered wood with bronze hardware. Varnished wood slats for protection.



ART DECO LIQUOR CABINET, BROWN

MF400

M. 75 x 37,5 x 150 cm, 29.5 x 14.8 x 59"



ART DECO LIQUOR CABINET, BLACK & WHITE

MF406

M. 75 x 37,5 x 150 cm, 29.5 x 14.8 x 59"



A sideboard, also known as a buffet or credenza, serves both functional and decorative purposes and is designed to provide additional storage, display, and serving space. A liquor cabinet, also called cellarette, is a small cabinet, available in various sizes, shapes, and designs used to store bottles of wine or whiskey. They appeared in Europe as early as the fifteenth century and first appeared in America in the early eighteenth century. These sideboards and liquor cabinets were popular through the nineteenth century. They were made of wood and were often designed to conceal them from the casual observer. They were found in pubs, taverns, and homes of the wealthy.

ART DECO SIDEBOARD

MF401

M. 160 x 40 x 63 cm, 63 x 15.8 x 30.3"





GRAND CLUB TRUNK BAR

MF134XB

M. 48 x 54 x 127 cm, 18.9 x 21.3 x 50"

Step off the beaten path and decide to create your own private club. The smell of leather, the feel of rich wood, the warm glow of subdued lighting. Act out that secret urge to be a bartender at Harry's Bar. Just wheel out this upscale serving station of superior drinks. Pull glasses from within, juggle bottles, break the ice and shake but do not stir.



SEWING BAR BOX

MF510

M. 40 x 30 x 67,5 cm, 15.7 x 11.8 x 26.6"



ELEGANT PICNIC BOX

MF178

M. 37 x 28 x 37 cm, 14.6 x 11 x 14.6"



PICNIC BOX VICTORIA

MF162

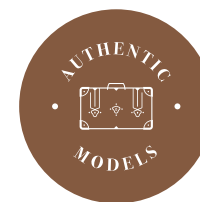
M. 45 x 26 x 40 cm, 18.8 x 10.8 x 16.6"





BOOKCASES & CABINETS

Dispatched for victuals for the captain's table or canvas for a sail blown away in a storm, gigs were invaluable when in port or moored outside. Our lapstrake (overlapping strips of wood) gigs are not seaworthy, but they most certainly look like it! Clinker build, they add flair and atmosphere to any room, and display shelves turn them into fun cabinets and bookcases.



DISCOVER OUR BOOKCASES & CABINETS HERE:





Gigs were invaluable when in port or moored outside. Referred to as rowboats by land-bound folk, a gig was easy to lower overboard, needed minimum crew, and was quick to dispatch. When stowed, it nested in the long boat or pilot boat secured in the center of the main deck. Our lapstrake (overlapping strips of wood) gigs are not seaworthy, but they most certainly look like it! Clinker build, they add flair and atmosphere to any room, and display shelves to turn them into fun cabinets and bookcases.



BOSUN'S GIG

MF251

M. 68 x 30,5 x 185 cm, 26.8 x 12 x 72.8"

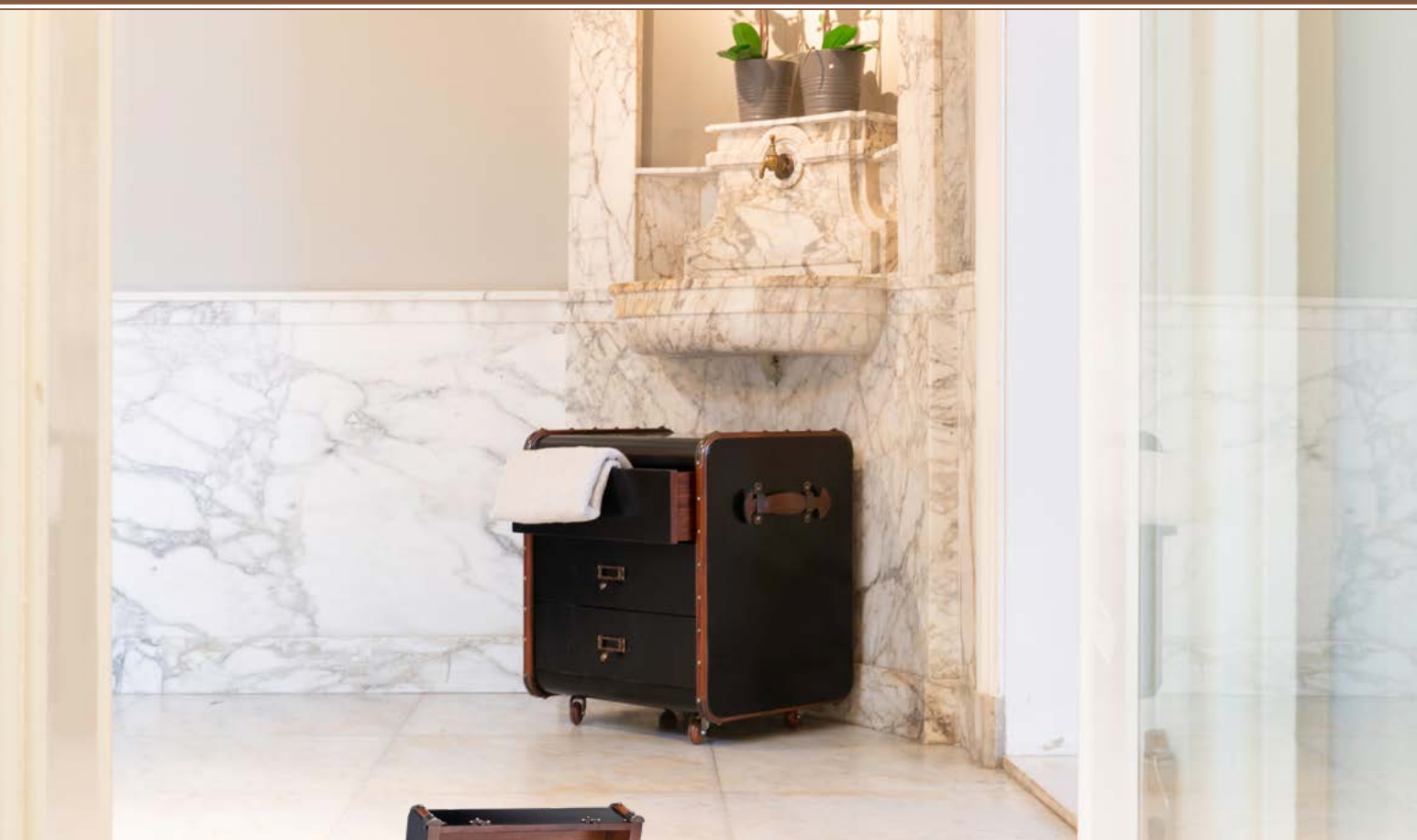


PORTHOLE CABINET

MF027

M. 46,5 x 62 x 153 cm, 18.3 x 36.2 x 60.2"

Famous yachtsmen sailing from from the USA were surprised at the lack of locker rooms, showers and docks when visiting the Royal Yacht Clubhouse at Cowes, England. Even a bar was absent while the cabins and staterooms of their visiting yachts were resplendent with grandeur. Our beautiful cabin cabinet with large porthole windows would probably have pleased them.



**STATEROOM
DRAWERS LARGE, OFF WHITE**
 MF159OW

M. 53 x 45 x 114 cm, 22 x 18.8 x 34.5"

**STATEROOM
DRAWERS SMALL, OFF WHITE**
 MF160OW

M. 53 x 45 x 61 cm, 26.8 x 12 x 24"

Wealthy Victorians didn't pack light when travelling by luxury steamer! They therefore created beautiful wheeled trunks to bring clothing and other possessions on board. In a new functional twist, we've turned our replica trunks into chests of drawers. So you can bring a taste of the luxury steamer lifestyle into your home via a stylish storage solution.



**STATEROOM
DRAWERS LARGE**

MF159

M. 53 x 45 x 114 cm, 22 x 18.8 x 34.5"

**STATEROOM
DRAWERS SMALL**

MF160

M. 53 x 45 x 61 cm, 26.8 x 12 x 24"





The Secrétaire 'Grand Hotel' holds some serious surprises and secrets so don't be fooled by its elegant appearance. Two stacked units offer campaign style compact storage. No wasted space here! At the same time you access a secret document box in the back. Big enough to store stacks of banknotes or someone's first love letters.

SECRETAIRE 'GRAND HOTEL'

MF063X

M. 80 x 49 x 108,5 cm, 31.5 x 19.3 x 42.7"



WAIKIKI SURFBOARD

FE121

M. 50 x 18 x 195 cm, 19.7 x 7.1 x 76.8"



CLASSIC LUGGAGE STAND

MF179

M. 60 x 53 x 64,5 cm, 23.6 x 20.9 x 25.4"



NEW

OAR COAT RACK

FE109

M. 187,5 x 68 x 68 cm, 73.8 x 26.8 x 26.8"

Only a few craftsmen now have the skills needed to build a classic wooden surfboard. Long enough to ride the waves and short enough to casually lean into a corner of your living room.



DESKS

Our desks are made to travel well and offer maximum comfort and space in a minimal floor area. Drawers to house the crew's papers, sealed sailing instructions, logbooks, charts, instruments and a pair of flintlock pistols. Brass corners to protect from damage when being moved around. Sturdy construction, made of cherry and maple and leather insert top.



DISCOVER OUR DESKS HERE:





The captain's desk was usually tailor made to offer maximum comfort and space in a minimal floor area. Drawers to house the crew's papers, sealed sailing instructions, logbooks, charts, instruments and a pair of flintlock pistols. Brass corners to protect from damage when being moved around. Sturdy construction, made of cherry and maple and leather insert top.

CAPTAIN'S DESK

MF014

M. 170 x 75 x 78 cm, 66.9 x 29.5 x 30.7"



EXPLORER DESK TRUNK

MF180

M. 48 x 54 x 127 cm, 18.9 x 21.3 x 50"

Our handcrafted steamer trunk is designed as a functional and aesthetically beautiful workplace. Capture the excitement of world exploration from an age when travelling required lots of planning and a spirit of adventure! The Explorer Desk Trunk incorporates the design and materials found in the original handmade luggage from the early 20th Century.



You want something solid. Lived in and comfortable. Warm and rich looking. Soft and easy to the touch as if waxed and polished by generations of housemaids. Drawers to hold documents and treasures. Brass campaign corners to survive damage during challenging moves across the country or even oceans. Our furniture is made to travel well.

TRAVEL DESK MADRAS

MF056

M. 150 x 37,5 x 75 cm, 59 x 14.8 x 29.5"



DISCOVER OUR DESKS HERE:



NAVIGATOR'S DESK

MF022

M. 140,5 x 70 x 78 cm, 55.3 x 27.6 x 30.7"

Travelers and seafarers of yore had to be resourceful in order to survive. Desks on board ships had to be cleared and stowed at a moment's notice. Things had to be multi-functional. In the case of our desk, the two supports could act as steps into the navigator's bunk, or to mount a camel, whichever came first. The desktop, complete with drawers and brass bound, could act to stop musket bullets when under fire. Faux leather top, somewhat beat-up; proof of its many voyages and colorful history.



Ideal desk for either hard work or pure pleasure and always in style.



ELEGANCE DESK, BLUE

MF402B

M. 85 x 40 x 96 cm, 33.5 x 15.8 x 37.8"



ELEGANCE DESK, GREEN

MF402G

M. 85 x 40 x 96 cm, 33.5 x 15.8 x 37.8"



ELEGANCE DESK, RATAN

MF402R

M. 85 x 40 x 96 cm, 33.5 x 15.8 x 37.8"



TOLEDO DESK

MF148

M. 152 x 56,5 x 78,5 cm, 60 x 22.2 x 30.9"





CHAIRS & STOOLS

You just walked the Rue Faubourg and are about to descend into the Louvre. Now's the time to make a pit stop in a reputable brasserie, maybe the Bofinger near the Opera? You are counting on a delicious café, maybe a small liqueur... Elbow on the bar rail, comfortably parked, with feet resting on the ring encircling the stool legs.



DISCOVER OUR CHAIRS & STOOLS HERE:





Enjoy your Martini shaken, not stirred everywhere.
This chair is just the right seating for it.
By the way, it doesn't always have to be on a barstool.



MARTINI CHAIR

MF407

M. 70 x 70 x 77 cm, 27.6 x 27.6 x 30.3"

Sit back, relax and enjoy the atmosphere.
That is the only thing you need to do when you
sit down in this beautifully designed stylish chair.



CLUB LOUGNE CHAIR, VELVET

MF405

M. 75 x 75 x 77 cm, 29.5 x 29.5 x 30.3"



Originally designed by London Army & Navy purveyors for Imperial Army officers on the move. Legs and frame rolled up inside the canvas seat or leather. Then in the 1920's taken by European settlers of the Argentina pampas, it became the gaucho's stock fo trade. Aged ones now populate living rooms of haciendas in Argentina and Uruguay. Designed to function on uneven footing, their flexibility surprises.



**BRIDLE LEATHER
CAMPAIGN CHAIR**

MF122

M. 55 x 56 x 89 cm, 21.8 x 22 x 35"



**BRIDLE LEATHER
CAMPAIGN CHAIR WHITE**

MF122W

M. 55 x 56 x 89 cm, 21.8 x 22 x 35"





MID-CENTURY RELAX CHAIR

MF253

M. 66 x 60 x 82 cm, 26 x 23.6 x 32.2"

The mid-century relax chair is a timeless piece of furniture that effortlessly combines style and comfort. This iconic design from the mid-20th century is known for its sleek lines, organic shapes, and a focus on functionality. A known classic, only now designed with unique features that gives it the Authentic Models look.

NEW



FIRESIDE STOOL

MF115

M. 52 x 40 x 60,5 cm, 20.5 x 15.8 x 23.8"



PURSER'S CHAIR

MF081

M. 55 x 61 x 78,5 cm, 23.6 x 21.6 x 30.7"

Striking, yet unassuming, our Purser's Chairs match perfectly to our collection of desks. The classic design goes back to utilitarian furniture from the Belle Époque. Handmade in hardwood, this chair will survive the ages when treated with respect.



PURSER'S CHAIR, BLACK

MF081B

M. 55 x 61 x 78,5 cm, 23.6 x 21.6 x 30.7"





TRIPOD STOOL

MF152

M. 36 x 33 x 55 cm, 14.3 x 13 x 21.8"

Speakeasies Were Prohibition's Worst-Kept Secrets. When Prohibition took effect on January 17, 1920, many thousands of formerly legal saloons across the country catering only to men closed down. Take a seat on our speakeasy bar stool and relive those turbulent times!



SPEAKEASY BAR STOOL

MF181

M. 47 x 47 x 80 cm, 18.5 x 18.5 x 31.5"



MAYAN BENCH STOOL, BLACK

MF176

M. 150 x 34 x 46 cm, 59 x 13 x 18"

NEW



CLASSIC HIGH BARSTOOL

MF184

M. 40 x 40 x 80 cm, 15.7 x 15.7 x 31.5"

NEW



CLASSIC LOW BARSTOOL

MF185

M. 40 x 40 x 42 cm, 15.7 x 15.7 x 16.5"



MAYAN LOW BARSTOOL, BLACK

MF174

M. 34 x 34 x 46 cm, 13 x 13 x 18"



TABLES

Bring out the laughter, drama and drink. Go for check or broke. If loaded dice and backgammon are more to your taste, change the board. Or unearth the boxed renaissance dominos and pull out the green board, domino, poker, Monopoly. When not in the mood for games, we also offer tables for more practical use; end table, shaving bench, breakfast plateau, you name it.



DISCOVER OUR TABLES HERE:





STATEROOM TRUNK TABLE, OFF WHITE

MF040OW

M. 82 x 49 x 46 cm, 27.2 x 19.3 x 18.1"

In bygone days traveling was for restless souls with matching bank accounts and a yen for romance.
Professional brass hardware, brass locks and keys, steamed cherry wood bent slats.
Complete with hand turned legs to serve a further life as a coffee table. Honey finished wood inside.



STATEROOM TRUNK TABLE BLACK

MF040B

M. 82 x 49 x 46 cm, 27.2 x 19.3 x 18.1"



STATEROOM TRUNK TABLE PETROL

MF040P

M. 82 x 49 x 46 cm, 27.2 x 19.3 x 18.1"



WOODEN TRUNK TRAY, LARGE

FF110

M. 72,5 x 47 x 9 cm, 25.6 x 18.5 x 3.6"

*Can be placed on and in the MF040W - MF040B - MF040P



NEW



STATEROOM END TABLE, OFF WHITE

MF079OW

M. 45 x 53 x 56 cm, 17.7 x 20.9 x 22"

Victorian luggage was made to ship by train, steamer, and horse drawn coach. Trunks were sent ahead and handled exclusively by porters. The classic maple hoops, strengthened by brass hardware and reinforced corners, protected the trunk and its contents from damage. The tall, square shape of our 'end table' trunk was designed to fit easily into tight cabins during extensive travel. Yet it was large enough to accommodate a tall, black stovepipe hat! Enjoy the flavor of a bygone age of luxury. Combine its fin-de-siècle appeal with the practicality of efficient storage.



WOODEN TRUNK TRAY, SMALL

FF109

M. 40 x 41,5 x 9 cm, 15.8 x 16.3 x 3.6"

*Can be placed on and in the MF079W - MF079B - MF079P



STATEROOM END TABLE BLACK

MF079B

M. 45 x 53 x 56 cm, 17.7 x 20.9 x 22"



STATEROOM END TABLE PETROL

MF079P

M. 45 x 53 x 56 cm, 17.7 x 20.9 x 22"



Our pièce de résistance – a true masterpiece of entertainment. This multifaceted piece invites you to immerse yourself in a world of laughter, drama, and libations. Whether you're up for a friendly checkers match or ready to go all-in with high-stakes poker, this is your arena.

For those who prefer a touch of strategic deceit, we offer loaded dice and backgammon, providing an opportunity to change the battlefield. Or perhaps you'll be tempted by the allure of the boxed Renaissance dominos, ready to be laid out on the green felt board. And don't forget the timeless classic, Monopoly, where fortunes can rise and fall in the blink of an eye.

However, when the mood for games subsides, you'll find even more versatility in this remarkable creation. Simply flip the board, and you'll be greeted by a luxurious cherry wood top or the timeless elegance of classic leather upholstery.

GAME TABLE, BLACK

MF020

M. 80 x 80 x 45 cm, 31.5 x 31.5 x 17.7"



Furniture

TABLES



GAME TABLE

MF034

M. 120 x 62 x 50 cm, 47.2 x 24.6 x 17.7"

But it's not just about games. This piece serves as the centerpiece of your entertainment oasis. Lower levels are thoughtfully designed to house rule books and cartons, ensuring that everything is within arm's reach, allowing you to effortlessly transition from one form of entertainment to another. In this haven of leisure, you have a world of entertainment at your fingertips. Whether you're a cunning strategist, a property mogul, or just someone looking for an elegant place to unwind, this piece is your ticket to a world of versatile enjoyment."

FIND YOUR IDEAL CHESS AND CHECKER
GAME PIECES OR ANY OTHER GAMES HERE:





NEW



SIDE TABLE WITH GAME BOARD

MF164

M. 45 x 45 x 66 cm, 17.7 x 17.7 x 26"



3-PLAYER CHESS TABLE

MF183

M. 55 x 55 x 75 cm, 21.7 x 21.7 x 29.5"

**Chess set included*

This stylish game table offers more than just a chessboard. Originally designed for mobile armies, it excels in versatility. It can double as an end table, providing a spot for decor or drinks. Its stable surface makes it a dependable shaving bench. Moreover, it becomes a charming breakfast plateau, enhancing dining experiences.



BRITISH BUTLER TABLE

CF003F

M. 47 x 59 x 56,5 cm, 34.3 x 26 x 24"



WAR CHEST

MF121

M. 56,5 x 40 x 65,5 cm, 22.3 x 15.8 x 26"

Traveling through the Provence, our picnic sojourn was to a medieval abbey not far away. We purchased cheeses, salamis and artisan bread with aged Burgundy to wash it all down. Somehow we managed to stash our victuals in the narrow boot of our roadster, leaving just enough space for our beloved vintage serving table. Since this handily folds, it occupies the smallest spaces.





MARINER STAR TABLE

MF085

M. 55 x 55 x 56 cm, 21.7 x 21.7 x 22"



LECTURE TABLE

MF186

M. 27 x 48 x 50 cm, 10.6 x 18.9 x 19.7"



Victorians called this style of table a cocktail table. The mariner's star brings to mind a First Class lounge. Exceptional artistry is used to apply the tabletop intarsia. Selected, contrasting veneers are expertly cut and assembled into a truly nautical table.



MARTINI TABLE, BLACK

MF408B

M. 35,5 x 35,5 x 55,5 cm, 14 x 14 x 21.9"



MARTINI TABLE, WHITE

MF408W

M. 35,5 x 35,5 x 55,5 cm, 14 x 14 x 21.9"



COCKTAIL TABLE, GOLD

MF411

M. 35 x 35 x 55,5 cm, 13.8 x 13.8 x 21.9"

Our Martini/Cocktail Table is a stylish and compact addition to any living space. Its small, round design makes it ideal for holding a cocktail glass or snacks, while its elegant materials and styles suit various home decors. Perfect for the occasion.



TABLE LAMPS

Your interior shouldn't be without our table lamps. A sophisticated table lamp for a contemporary, traditional, or trendy living style creates a relaxing ambiance and illuminates any area of your home. Perfect for a bedside table, a sideboard, a TV stand, an open cabinet, or a side table. Or place one in your office so you can work in style.



DISCOVER OUR TABLE LAMPS HERE:





Uniquely designed table lamps in a beautiful art deco style. Your guests will love it!



**ART DECO CIRCLE
LAMP SINGLE, SILVER**
SL084

M. 15 x 15 x 26 cm, 5.9 x 5.9 x 10.2"
**No lampshade included*



**ART DECO CIRCLE
LAMP DOUBLE, SILVER**
SL085

M. 15 x 15 x 38 cm, 5.9 x 5.9 x 15"
**No lampshade included*



**ART DECO CIRCLE
LAMP SINGLE, GOLD**
SL086

M. 15 x 15 x 26 cm, 5.9 x 5.9 x 10.2"
**No lampshade included*



**ART DECO CIRCLE
LAMP DOUBLE, GOLD**
SL087

M. 15 x 15 x 38 cm, 5.9 x 5.9 x 15"
**No lampshade included*



**ART DECO DESK
LAMP WITH GLASS**
SL079

M. 14 x 14 x 48 cm, 5.5 x 5.5 x 18.9"
**No lampshade included*



**MIAMI MUSHROOM
DESK LAMP**
SL089

M. 34 x 34 x 42 cm, 13.4 x 13.4 x 16.5"



WAVE LAMP. L

SL082

M. 18 x 18 x 63 cm, 7 x 7 x 24.8"

**No lampshade included*



WAVE LAMP. M

SL083

M. 15 x 15 x 53 cm, 5.9 x 5.9 x 20.9"

**No lampshade included*



**ROARING TWENTIES
VASE LAMP, XL**

SL080

M. 20 x 20 x 52 cm, 7.9 x 7.9 x 20.5"

**Lampshade included*



**ROARING TWENTIES
VASE LAMP, L**

SL081

M. 15 x 15 x 50 cm, 5.9 x 5.9 x 19.7"

**Lampshade included*

Takes you back to the Roaring Twenties for sure.





CLASSIC DESK LAMP

SL090

M. 21 x 21 x 48 cm, 8.2 x 8.2 x 18.9"



WRITER'S DESK LAMP

SL049

M. 21 x 21 x 42 cm, 8.3 x 8.3 x 16.5"



RAY'S DESK LAMP

SL077

M. 25 x 19 x 60 cm, 9.9 x 7.5 x 23.6"



ANCHOR LAMP, BRASS & COPPER

SL043

M. 19 x 19 x 30 cm, 7.5 x 7.5 x 12"



VENETIAN LANTERN, ANTIQUE SILVER

SL047A

M. 18 x 18 x 34.5 cm, 7.1 x 7.1 x 13.6"



STEVEDORE'S LAMP

SL057

M. 12 x 12 x 40 cm, 4.7 x 4.7 x 15.8"



STANDING LAMPS

Our standing lamps can transform the darkest corners of a room into the most inviting spaces to read, relax, or work in. Ideal for large spaces, as it provides a lot of extra light. Besides being functional, our standing lamps add sophistication and style to your home. Enlight your home today with these Authentic Models lamps.



DISCOVER OUR STANDING LAMPS HERE:





HOLLYWOOD CINEMA LIGHT

SL073

M. 74 x 74 x 153 cm, 29.3 x 29.3 x 60.3"

This detailed replica of a Hollywood stage light from the 1950s brings all the glamour and romance of that era right into the home. This attractive statement piece can be used to create an inviting ambience by adjusting the beam, brightness, strength and direction to the exact preference. Just as the original's users would have done to bring out the best in the world's most famous faces.



1940'S SURGEON LAMP

SL042

M. 170 x 78 x 215 cm, 67 x 30.8 x 84.8"



**HALF MILE
RAY SEARCHLIGHT**

SL040

M. 60 x 60 x 164 cm, 23.5 x 23.5 x 64.5"



**RAY
SPOTLIGHT**

SL076

M. 63 x 58 x 159 cm, 24.8 x 22.8 x 62.6"

Our lighting collection is inspired by the most memorable industrial buildings, the stories of maritime vessels and the shapes of vintage cars. Handcrafted components contribute greatly to their unique resemblance, whilst still be a one of a kind eye catcher in any room. Illuminate yourself like Hollywood's brightest stars and reflect the scenarios they were created for.



HANGING LAMPS

A hanging lamp over your dining room table may really set the mood. The hanging lamp's design is important, but the ambiance is also influenced by the material and light source. Because of this, we gave our line of hanging lamps careful consideration in every way. Our hanging lamp can also be placed in the living room, hallway, bedroom, or kid's room. Light up your interior today!



DISCOVER OUR HANGING LAMPS HERE:





MAIN HOLD LAMP

SL037

M. 50 x 50 x 51 cm, 19.8 x 19.8 x 20"



LUMINA LIGHT

SL071

M. 30 x 30 x 40 cm, 11.8 x 11.8 x 15.8"



RAY' HANGING LAMP

SL078

M. 30 x 30 x 26 cm, 11.8 x 11.8 x 10.2"



HANGAR LIGHT

SL072

M. 33,5 x 33,5 x 58 cm, 13.9 x 13.9 x 24.1"



CARGO INSPECTION LAMP

SL058

M. 35 x 35 x 35 cm, 13.8 x 13.8 x 13.8"



CHARLESTON LAMP

SL067

M. 36 x 36 x 18,5 cm, 14.2 x 14.2 x 7.3"



STEAM FUNNEL LAMP

SL069

M. 23,3 x 23,3 x 49 cm, 9.2 x 9.2 x 19.3"



FUNNEL WALL LAMP

SL074

M. 17 x 13 x 29 cm, 7 x 7.5 x 12"



AUTHENTIC MODELS HEAD OFFICE GLOBAL



Authentic Models BV

Ambachtsweg 37
3899 AM Zeewolde
The Netherlands
Phone +31 - (0)36 - 52 191 91
sales.eu@authenticmodels.com

OFFICE UNITED STATES



Authentic Models Americas Inc.

50 Irving Road, P.O. Box 40670
Eugene, OR 97404
Phone 541 - 686 - 4666
Toll-Free 800 - 888 - 1992
Fax 541 - 686 - 5111
sales.usa@authenticmodels.com

JOIN US ONLINE



instagram.com/AMAuthenticModels



facebook.com/AMAuthenticModels



pinterest.com/am7394



linkedin.com/company/authenticmodels



https://www.tiktok.com/@amauthenticmodels

#AUTHENTICMODELS

SHARE YOUR FAVORITES WITH US

SALES OFFICES EUROPE



Authentic Models Benelux

Phone +31 - (0)36 52 191 73
Phone +31 - 6 330 123 10
sales.eu@authenticmodels.com



Authentic Models Germany (DACH)

Phone +31 - (0)36 52 191 75
Phone +31 - 6 207 269 81
sales.eu@authenticmodels.com



Authentic Models France

Phone +31 - (0)36 52 191 82
Phone +31 - 6 837 047 43
sales.eu@authenticmodels.com



Authentic Models Italy

Phone +31 - (0)36 52 191 76
Phone +39 - 379 2260956
am-italy@authenticmodels.com



Authentic Models Spain

Phone +31 - (0)36 52 191 76
Phone +34 - 93 81 24 366
am-spain@authenticmodels.com



Authentic Models UK & Ireland

Phone +44 - (0)1403 734 999
Phone +44 - 7919 483 927
am-uk@authenticmodels.com



Authentic Models Asia-Pacific

Phone +31 - (0)36 52 191 74
Phone +31 - 6 525 934 52
sales.eu@authenticmodels.com



Visit our website and stay informed about the latest collection.

WWW.AUTHENTICMODELS.COM



COPYRIGHT

No part of this publication may be reproduced in any manner or form whatsoever without the prior written permission of Authentic Models and other copyright holders. No rights can be derived from this publication.

DISCLAIMER

Authentic Models makes every effort to maintain the accuracy and quality of the information provided in this catalogue. However, Authentic Models cannot guarantee and assumes no legal liability or responsibility for the accuracy or completeness of the information provided. It is important to bear in mind that the colours shown in this catalogue may not be an accurate representations of the actual colours of the items. The colour reproduction in this catalogue should only be used as a rough guide for selecting item colours. Our products are for indoor use only.

UNIQUE PRODUCTS

Most products in the Authentic Models collection are handcrafted from natural materials. This means products are rarely completely identical and may show variance in colour, size or finish. We believe this aspect adds to the value and quality of these products. Small irregularities in shapes, surfaces and finishes are hallmarks of hand-craftsmanship and should not be considered defects.

COPYRIGHT

Aucune partie de cette publication ne peut être reproduite de quelque manière ou sous quelque forme que ce soit sans l'autorisation écrite préalable d'Authentic Models et d'autres détenteurs de droits d'auteur. Aucun droit ne peut être dérivé de cette publication.

AVIS DE NON-RESPONSABILITÉ

Authentic Models BV met tout en œuvre pour maintenir l'exactitude et la qualité des informations fournies dans ce catalogue. Toutefois, Authentic Models ne peut garantir et n'assume aucune responsabilité légale concernant l'exactitude ou l'exhaustivité des informations fournies.

Il est important de garder à l'esprit que les couleurs illustrées dans ce catalogue peuvent ne pas être des représentations exactes des couleurs réelles des articles. La reproduction des couleurs dans ce catalogue ne doit être utilisée que pour vous guider dans le choix des couleurs des articles. Nos produits sont destinés uniquement à un usage intérieur.

DES PRODUITS UNIQUES

Certains produits de la collection Authentic Models sont fabriqués à la main à partir de matériaux naturels. Cela signifie que les produits sont rarement totalement identiques et peuvent présenter des différences de couleur, de taille ou de finition. Nous estimons que cet aspect ajoute de la valeur et de la qualité à ces produits. De petites irrégularités dans les formes, surfaces et finitions sont caractéristiques du travail artisanal et ne doivent pas être considérées comme des défauts.

COPYRIGHT

Kein Teil dieser Veröffentlichung darf ohne vorherige schriftliche Zustimmung von Authentic Models und anderen Urheberrechtsinhabern auf irgendeine Weise oder in irgendeiner Form reproduziert werden. Aus dieser Veröffentlichung können keine Rechte abgeleitet werden.

HAFTUNGSAUSSCHLUSS

Authentic Models BV bemüht sich nach Kräften, die Richtigkeit und Qualität der in diesem Katalog enthaltenen Informationen sicherzustellen. Authentic Models kann allerdings die Richtigkeit oder Vollständigkeit der vorgelegten Informationen nicht garantieren und übernimmt diesbezüglich keine gesetzliche Haftung oder Verantwortung.

Es ist wichtig zu berücksichtigen, dass die in diesem Katalog gezeigten Farben die tatsächlichen Farben der Artikel eventuell nicht genau wiedergeben. Die Farbwiedergabe in diesem Katalog sollte lediglich als grober Anhaltspunkt bei der Auswahl farbiger Artikel genutzt werden. Unsere Produkte sind nur für den Innenbereich bestimmt.

UNIKATE

Einige Produkte in der Kollektion von Authentic Models werden aus natürlichen Materialien von Hand hergestellt. Das bedeutet, dass die Produkte nur selten vollständig identisch sind und sich eventuell in Bezug auf Farbe, Größe oder Oberflächengestaltung voneinander unterscheiden. Wir sind davon überzeugt, dass dies zum Wert und zur Qualität dieser Produkte beiträgt. Geringfügige Abweichungen in Bezug auf Formen, Oberflächen und Endbearbeitung sind Kennzeichen der Fertigung von Hand und sollten nicht als Mängel betrachtet werden.

VISIT OUR WEBSITE HERE:





— THE COLLECTION BOOK OF —
AUTHENTIC MODELS
— DESIGNS WITH A STORY —